

# It's America

with America, the Beautiful

Words and Music by  
**BRETT JAMES**  
 and **ANGELO T. PETRAGLIA**  
*Arranged by Russell Mauldin*

**1** Majestically! ♩ = 86 B♭2

2

4 B2

6 C2

© 2008 Stage Three Songs, Brett James Cornelius Music,  
 Songs of Windswept Pacific and Slanky Dank Music.  
 All rights for Stage Three Songs and Brett James Cornelius Music  
 admin. by Stage Three Music (U.S.) Inc., a BMG Chrysalis Company.  
 All rights for Songs of Windswept Pacific and Slanky Dank Music  
 admin. by Bug Music, Inc., a BMG Chrysalis Company.  
 All Rights Reserved. Used by Permission. Reprinted by Permission of Hal Leonard Corporation.

EVEN IF YOU POSSESS A CCLI LICENSE, YOU MAY NOT COPY THIS MUSIC.  
 If you have questions about CCLI, please call 800/234-2446.

8 *AMERICA, THE BEAUTIFUL (Katharine Lee Bates/Samuel Ward)* *rit.* *ff*

A -

$\text{Ab}^2$   $\text{G}^2$   
C B

Gsus G

3 3 3 3 *rit.* 3

11 *Broadly*

mer - i - ca! A - mer - i - ca! God shed His grace on

C Gm7  $\text{C}^7$  Fmaj7 G  $\text{C}^2$  Dm Dm6 Em11 Em7  
E E

*ff Broadly*

14 *unison*

thee, and crown thy good with broth - er-hood from

*unison*

Am Fm6 C Am Fmaj7  $\text{C}^2$  Eb6  
A $\flat$  G F $\sharp$  E 9

17

sea to shin - ing sea!

Dm11 Gsus G7 C2

3

Driving! ♩ = 136

20

G C

*f* Driving!

SOLO (opt. WOMEN: unison) *mf*

23

Driv-in' down the street...

Em7 D Dsus D C2

*mf*

26

— to-day, I saw a sign for lem - on-ade;

G

29

they were the cut-est kids I'd ev - er seen in this front yard.

C2 Em

32

As they hand-ed me my glass,

D C2

35

smil-in', think - in' to my - self, "Man, what a pic-

G B Am

# From Sea to Shining Sea (An Americana Medley)

with *She'll Be Coming 'Round the Mountain,*  
I've Been Working on the Railroad,  
and *Oh Shenandoah*

Lyrics adapted by  
Deborah Craig-Claar

Arranged by Russell Mauldin

With a hoedown feel ♩ = 102

**13** NARRATOR: "It started with families . . ."

*(Violin Solo)*

*mf*

*(Banjo Solo)*

*mf*

**14** "... unite a nation."

*mf*

*SHE'LL BE COMING 'ROUND THE MOUNTAIN (Traditional American Folk Song)*

CHILDREN

*mf*

10

She'll be com - in' 'round the moun - tain when she

*mf*

© 2014 Word Music, LLC (ASCAP)  
All Rights Reserved.

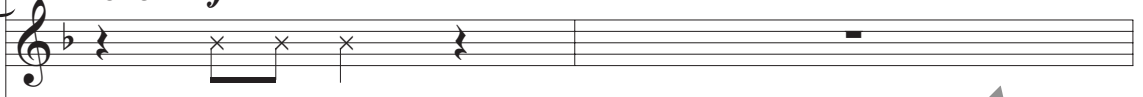
EVEN IF YOU POSSESS A CCLI LICENSE, YOU MAY NOT COPY THIS MUSIC.  
If you have questions about CCLI, please call 800/234-2446.

12

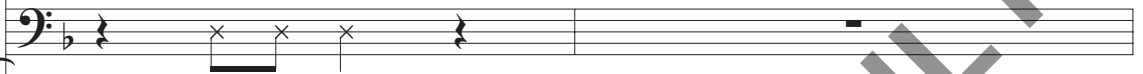


comes. She'll be com - in' 'round the moun - tain when she

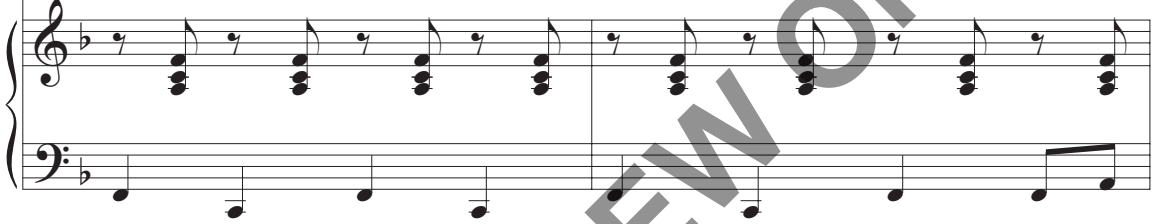
*CHOIR mf*



When she comes!



12



14



comes. She'll be com - in' 'round the moun - tain, she'll be unison



Yee - - haw!

Ooo unison



14



15

16



com-in' 'round the moun-tain, she'll be com-in' 'round the moun-tain when she

Piano accompaniment for measures 16-17. The right hand has a melodic line with a fermata over the first measure. The left hand has a simple bass line.

Com-in' 'round the moun-tain.

Piano accompaniment for measures 16-17 with chords. The right hand has a chordal accompaniment. The left hand has a simple bass line. Chords are labeled B $\flat$ , F, and C.

18



comes. Oh, we'll all go out to meet her when she

Piano accompaniment for measures 18-19. The right hand has a melodic line with a fermata over the first measure. The left hand has a simple bass line.

When she comes!

Piano accompaniment for measures 18-19 with chords. The right hand has a chordal accompaniment. The left hand has a simple bass line. Chords are labeled F.

# A Tribute to George M. Cohan

with **The Yankee Doodle Boy, Over There,**  
and **You're a Grand Old Flag**

Arranged by Russell Mauldin

29 **Brightly!** ♩ = 134

Piano introduction in 4/4 time, key of G major. The music starts with a mezzo-forte (mf) dynamic and a half note G4. It then moves to a forte (f) dynamic with a series of chords: D, Ddim7, and D7. The bass line features a rhythmic pattern of eighth notes.

**THE YANKEE DOODLE BOY** (George M. Cohan)  
CHOIR: unison *f*

Vocal line for the choir, unison, starting at measure 5. The melody begins with a half note G4, followed by quarter notes A4, B4, C5, and D5. The lyrics are: "I'm a Yan-kee Doo-dle".

Piano accompaniment for the vocal line. It features a rhythmic pattern of eighth notes in the right hand and a bass line of quarter notes in the left hand. Chords include N.C. (No Chords) and G.

Vocal line for the choir, unison, starting at measure 8. The melody continues with quarter notes E5, D5, C5, B4, and A4. The lyrics are: "dan - dy, a Yan - kee Doo-dle, do or die; a".

Piano accompaniment for the vocal line. It features a rhythmic pattern of eighth notes in the right hand and a bass line of quarter notes in the left hand. Chords include A7/E, D7, and G.

© 2014 Word Music, LLC (ASCAP).  
All Rights Reserved.

EVEN IF YOU POSSESS A CCLI LICENSE, YOU MAY NOT COPY THIS MUSIC.  
If you have questions about CCLI, please call 800/234-2446.



11

real live neph - ew of my Un - cle Sam,

E7 Am E7/G# Am

13

born on the Fourth of Ju - ly. I've unison

A9 D7

15

got a Yan - kee Doo - dle sweet - heart,

(harm.)

G A7/E

17

she's my Yan - kee Doo - dle joy.

D7 G

19

Yan - kee Doo - dle came to Lon - don just to ride the po - nies;

G(no3)

21 **30** *unison*

I am the Yan - kee Doo - dle Boy. I've unison

$\Delta$ 7 E D7 G D7

# God Is Nigh (Taps)

TRADITIONAL

Additional Lyrics by Deborah Craig-Claar

TRADITIONAL

Additional Music by Russell Mauldin

Arranged by Russell Mauldin

Reverently ♩ = 76

39

*mp*

*CHOIR: unison mp*

Day is done, gone the

*E♭sus E♭*

sun from the lake, from the hills, from the sky. All is

*E♭ D Cm7 E♭ B♭*

Lyrics permission granted by Pennsylvania Military College

Arr. © 2014 Word Music, LLC (ASCAP)

All Rights Reserved.

EVEN IF YOU POSSESS A CCLI LICENSE, YOU MAY NOT COPY THIS MUSIC.

If you have questions about CCLI, please call 800/234-2446.

9

well, safe - ly rest; God is nigh.

$E\flat$   
 $A\flat$        $E\flat$   
 $G$        $E\flat$   
 $G$        $Fm7(4)$        $D\flat$   
 $9^6$

12

— Fad - ing light dims the sight, and a  
(harm.)

$E\flat$        $E\flat$   
 $A\flat$

15

star gems the sky, gleam-ing bright. From a - far, draw - ing

$E\flat$   
 $G$        $Fm9$        $D\flat$   
 $maj7$        $Cm7$

18 *unison* **41** *mf*

nigh, falls the night. May they find

*unison*

Fm7(4) Eb sus Eb Fm7(4)  $\frac{Eb}{G}$

21

peace from the bat - tle, may they find rest in His care.

Abadd9  $\frac{Eb}{G}$  Fm7(4)

*mf*

24

For the price they paid, let us

the life they gave,

$\frac{Eb2}{G}$   $\frac{Eb}{G}$   $\frac{Eb\text{maj}7}{G}$  Ab Am7(b5)

42

*unison*

27

lift up this pray'r: Thanks and  
*unison*

$E\flat$   
 $B\flat$   $A\flat 6$   
 $B\flat$   $B\flat 6$   
 $C$   $C 7$

30

praise for their days, 'neath the sun, 'neath the stars, 'neath the  
*(harm.)*

$F$   $F$   
 $B\flat$   $A$

33

sky. All is well, safe - ly rest; God is

$Gm9$   $E\flat maj7$   $Dm7$   $Gm7(4)$

(music begins to “Color Me America”)

**NARRATOR:** Whether raised against the dawn’s early light or silhouetted at half-mast against the setting sun, the colors of America have always reflected the character of her people. In 1782, Charles Thomson, secretary of the original Continental Congress, issued this report, stating:

**CHARLES THOMSON:** White will signify purity and innocence; Red—hardiness and valor; and Blue—vigilance, perseverance . . . and justice.

## Color Me America

with America, the Beautiful

Words and Music by  
**DOLLY PARTON**  
Arranged by Russell Mauldin

With strength ♩ = ca. 70

46

N.C. NARRATOR: “Whether raised against . . .”

(Strings) *mp* (Trumpet solo)

CHARLES THOMSON: “White will signify . . .”

5 *B<sup>b2</sup>* *B<sup>b</sup>* *E<sup>b2</sup>/<sub>B<sup>b</sup></sub>*

47

“ . . . and justice.”

SOLO (with some freedom)  
*mf*

9 *B<sup>b</sup>* *B<sup>b</sup>/<sub>D</sub>* *E<sup>b</sup>maj7* *E<sup>b</sup>/<sub>F</sub>* *B<sup>b2</sup>* *B<sup>b</sup>*

1. I am Red and White and Blue; these are

© 2003 Velvet Apple Music. All Rights Reserved.  
Used by Permission. Reprinted by Permission of Hal Leonard Corporation.

EVEN IF YOU POSSESS A CCLI LICENSE, YOU MAY NOT COPY THIS MUSIC.  
If you have questions about CCLI, please call 800/234-2446.

12

col-ors that ring true to all I am and feel and love and

$E\flat$   
 $B\flat$   $B\flat$   
D C7

14

do. I stand proud and brave and tall; I want

Fsus F  $B\flat$ 2  $B\flat$   $F$   
 $B\flat$

48

16

jus-tice for us all. Col - or me A-mer - i - ca, Red, White and

*mf* CHOIR: unison

Col - or me A-mer - i - ca.

$E\flat$   $E\flat$  $m$ 6  $B\flat$   $B\flat$   $E\flat$ maj7 F  
 $B\flat$  D

16



49

18

Blue. 2. I see red when e - vil speaks, spill - ing

B $\flat$  B $\flat$ / $\text{D}$  E $\flat$ maj7 E $\flat$ / $\text{F}$  B $\flat$ 2 B $\flat$

21

red blood on our streets, and I feel blue from grief and sor - row that it

E $\flat$ maj7 B $\flat$ 2/ $\text{D}$  C2/ $\text{E}$

23

brings. But the white, the light of love, - God's own

*CHOIR mf*

Ooo

23

Fsus F B $\flat$ 2 B $\flat$ / $\text{D}$

# Finale

## with The Star-Spangled Banner and It's America (Reprise)

Reverently ♩ = 60

Arranged by Russell Mauldin

**54** N.C. NARRATOR: "On March 4, 1865, ..."

PRESIDENT LINCOLN: "With malice toward ..."

"... for the future."

NARRATOR: "Please stand and join us ... **Faster** ♩ = 82 ... of the United States of America."

$E_b$   $A_b$   $E_b$   $D_b m6$   $A_b$   $E_b$   $A_b$   $D_b m6$   
 $D_b$   $C$   $B_b$   $F_b$   $E_b$   $D_b$   $C$   $F_b$

Arr. © 2014 Word Music, LLC (ASCAP)  
All Rights Reserved.

EVEN IF YOU POSSESS A CCLI LICENSE, YOU MAY NOT COPY THIS MUSIC.  
If you have questions about CCLI, please call 800/234-2446.

## THE STAR-SPANGLED BANNER (Francis Scott Key/Attr. to John Stafford Smith)

**f** CHOIR

14

O — say, can you

17

see, by the dawn's ear - ly light, — what so

20

proud - ly we hailed at the twi - light's last

unison

unison

N.C.

Ab  
Eb

Absus  
Eb

Eb

Absus

Ab

Ab

Eb  
G

Fm

C7  
E

Fm

Ab  
Bb

Bb7

Ebsus

Eb

Eb  
Db

FOR PREVIEW ONLY

23

gleam - ing, whose broad stripes and bright stars, through the

*Ab*2 *E<sup>b</sup>*/*G* *Fm* *C7*/*E*

26

per - il - ous fight, o'er the ram - parts we

*Fm* *A<sup>b</sup>*/*B<sup>b</sup>* *B<sup>b</sup>7* *E<sup>b</sup>* *sus* *E<sup>b</sup>* *E<sup>b</sup>*/*D<sup>b</sup>* *A<sup>b</sup>*/*C* *E<sup>b</sup>*/*B<sup>b</sup>* *A<sup>b</sup>*

29

56 *unison*

watched, were so gal - lant - ly stream - ing?

*unison*

*E<sup>b</sup>* *E<sup>b</sup>*/*D<sup>b</sup>* *A<sup>b</sup>*/*C* *N.C.*